

# VFC400

## Data Logger Configuration

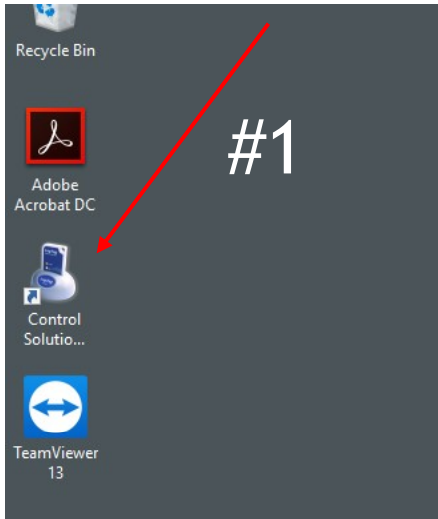


Programming your settings



# Open Control Solutions VTMC

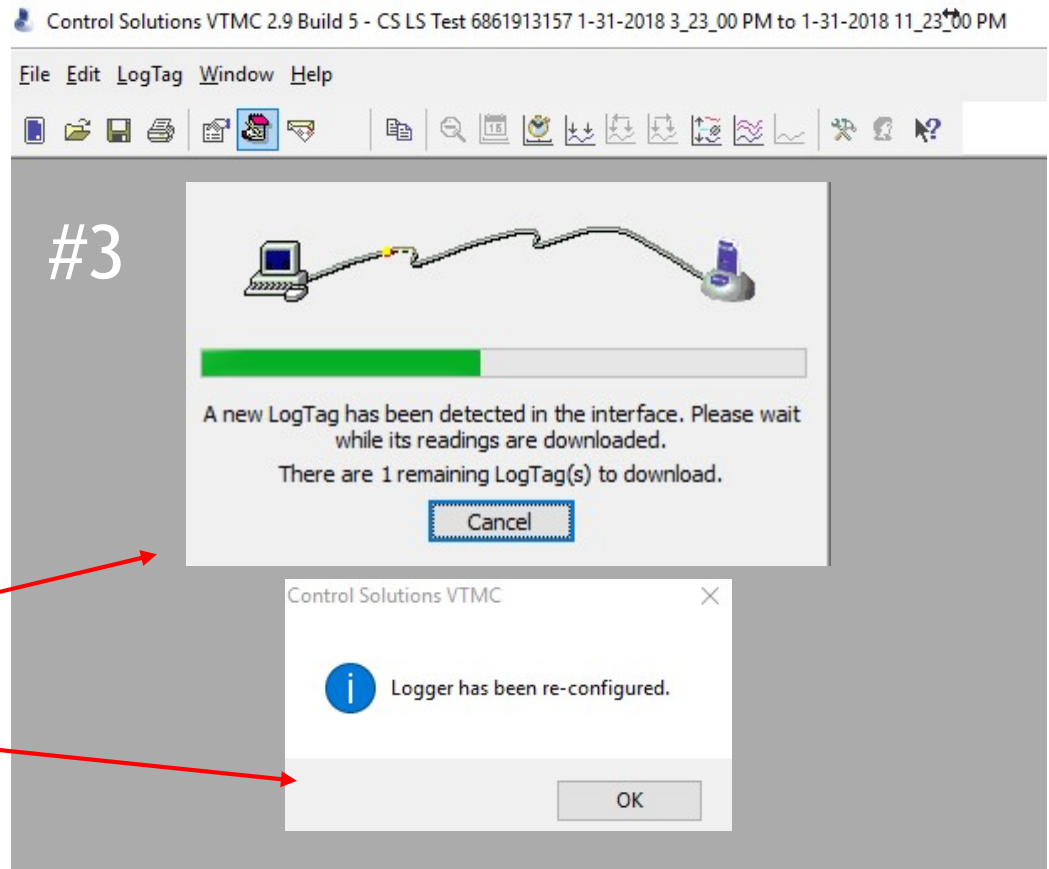
by clicking on the icon on your desktop



Once the logger is placed in the docking station you will see two windows: the first will tell you the logger has been detected, the second will tell you the logger has been re-configured. Click OK

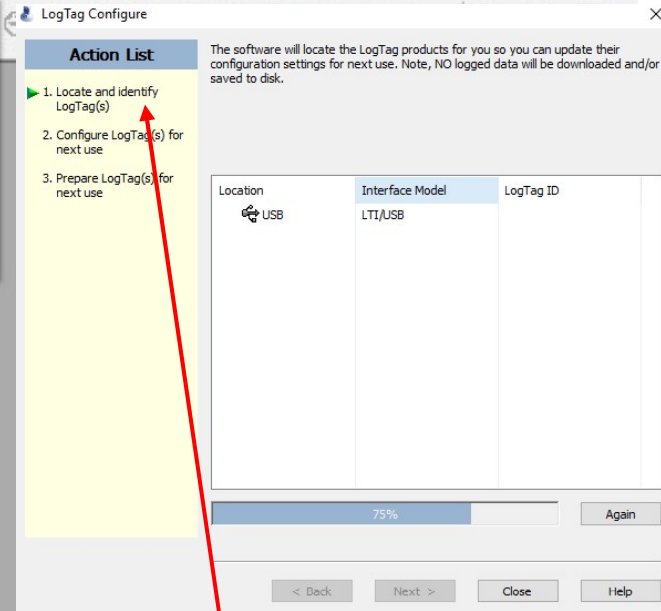
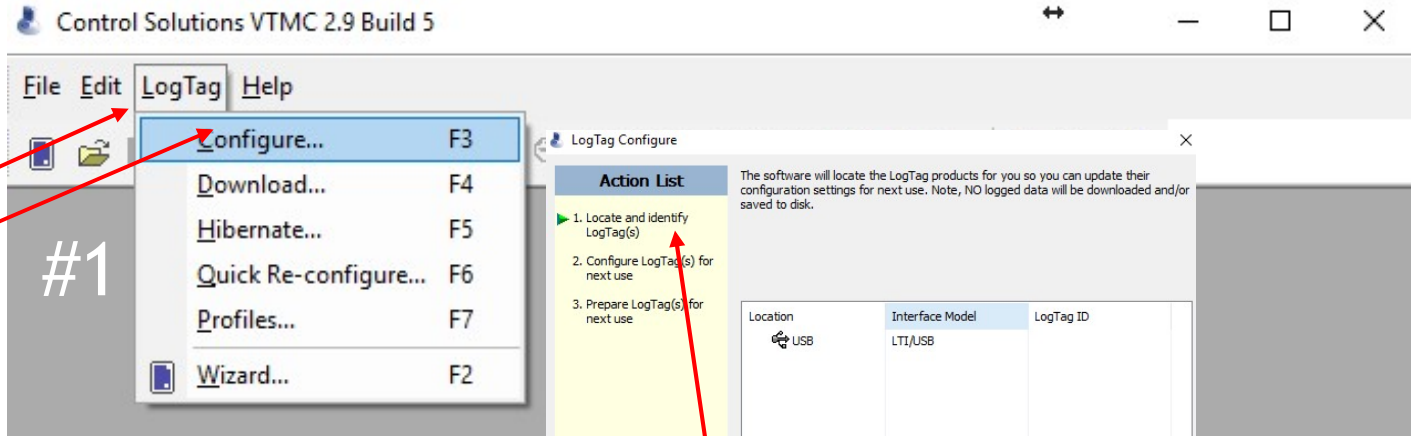


Plug the docking station into the USB port of your computer then place the data logger *firmly* into the docking station



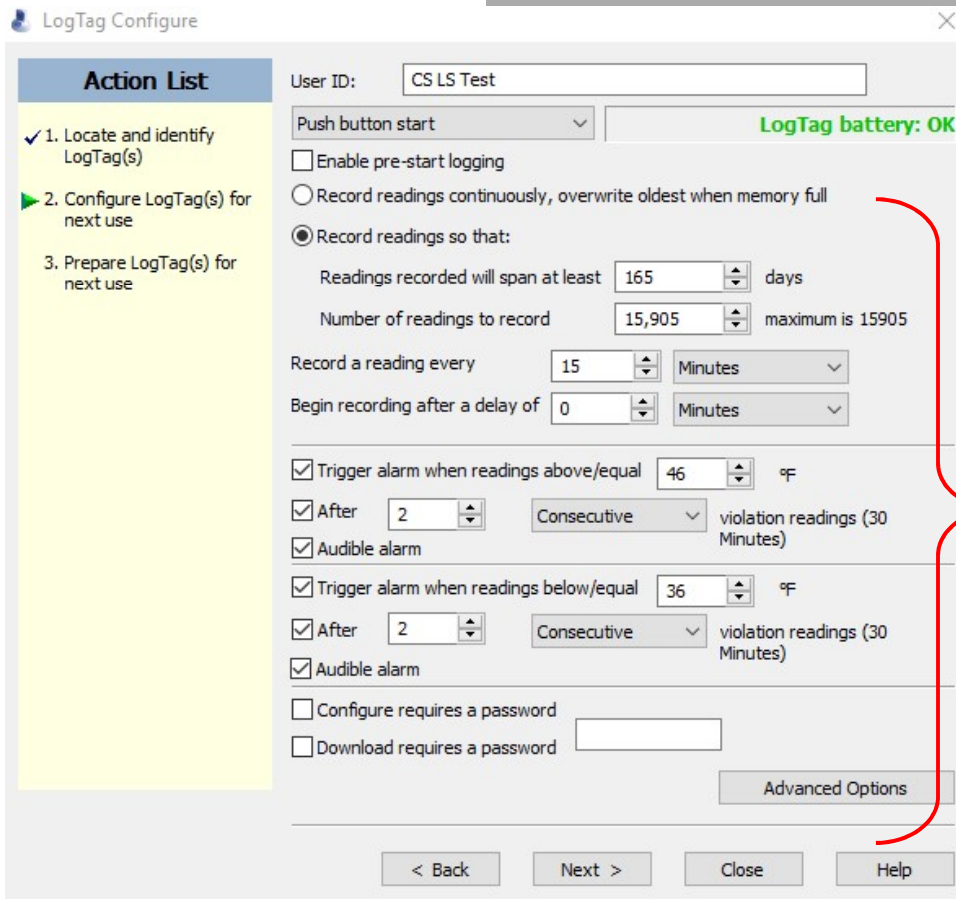
Now choose LogTag then Configure.

**\*\*Please check the last slide for the correct settings.**



After choosing Configure the software will locate and identify your logger.

Once identified the Configuration settings window will appear. Here you will enter your desired settings.



Check the button next to "Record Readings So That".

#1

#2

Skip to "Record a Reading Every" and change it to your state's recommendation;

typically between 6-30 minutes. Change the drop down to "Minutes".

The screenshot shows the 'LogTag Configure' window with the following settings:

- Action List:**
  - 1. Locate and identify LogTag(s) [checked]
  - 2. Configure LogTag(s) for next use [selected]
  - 3. Prepare LogTag(s) for next use
- User ID:** CS LS Test
- Start Method:** Push button start
- LogTag battery:** OK
- Enable pre-start logging:** [unchecked]
- Record readings continuously, overwrite oldest when memory full:** [unchecked]
- Record readings so that:** [selected]
  - Readings recorded will span at least: 165 days
  - Number of readings to record: 18,905 (maximum is 15905)
  - Record a reading every: 15 Minutes
  - Begin recording after a delay of: 0 Minutes
- High Alarm:**
  - Trigger alarm when readings above/equal: 46 °F [checked]
  - After: 2 Consecutive violation readings (30 Minutes) [checked]
  - Audible alarm: [checked]
- Low Alarm:**
  - Trigger alarm when readings below/equal: 36 °F [checked]
  - After: 2 Consecutive violation readings (30 Minutes) [checked]
  - Audible alarm: [checked]
- Configure requires a password:** [unchecked]
- Download requires a password:** [unchecked]
- Advanced Options:** [button]
- Navigation:** < Back, Next >, Close, Help

Check these 6 boxes and configure your alarms with the appropriate temperatures for a fridge or freezer.

#3

#4

The VFC400 can be set up with a delay for the high and low alarm.

In this example, we set the alarms for 2 consecutive samples-30 minutes.

Check with your state VFC program to see if they allow a delay for the high/low alarms.

#5

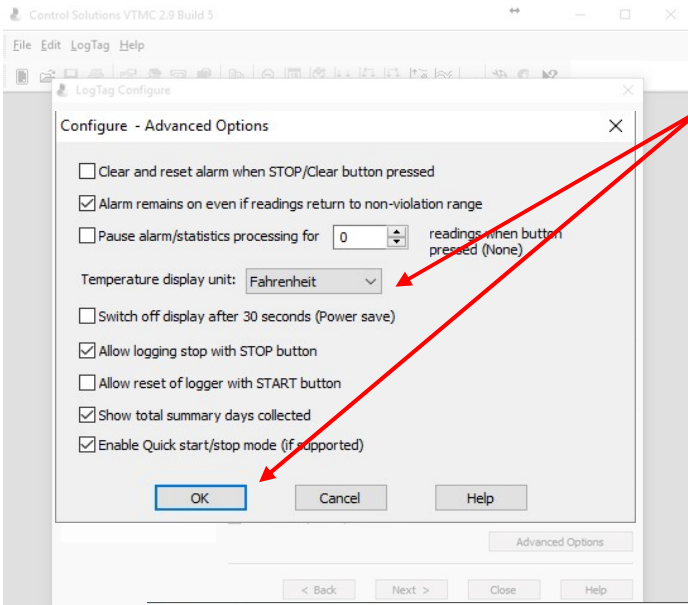
After completing steps 1-4 click the Advanced Options button here.

Advanced options instructions on next page.

CDC Recommended temperature ranges:  
Refrigerator: 36° to 46°F (2° to 8°C)  
Freezer: -40° to 5°F (-40° to -15°C)

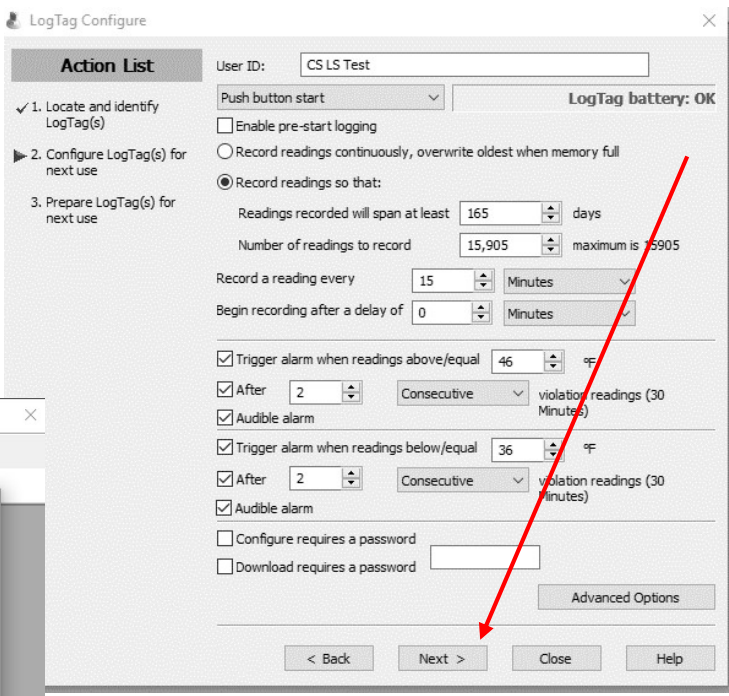




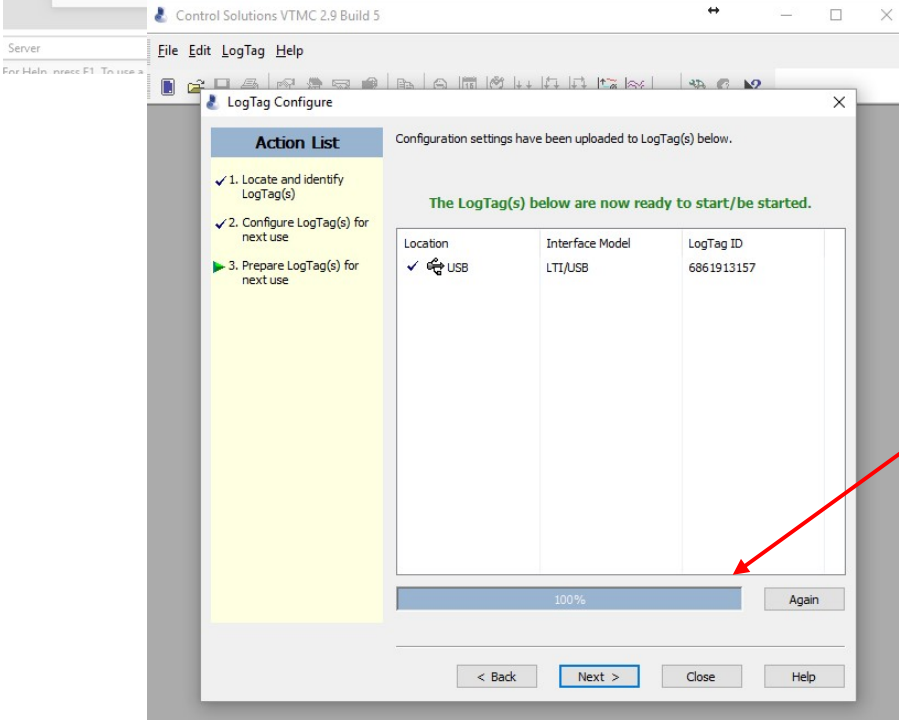


Choose the temperature scale you would like displayed on the data logger; Fahrenheit or Celsius. Select OK.

The Advanced Options menu will close after clicking OK.



Click the Next button to complete the configuration of the data logger.



Once the status bar reaches 100% the data logger can be removed from the docking station and you can close the configuration window.



# Configuration Settings

## Fridge

LogTag Configure

User ID:

Push button start

Enable pre-start logging

Record readings continuously, overwrite oldest when memory full

Record readings so that:

Readings recorded will span at least  days

Number of readings to record  maximum is 15905

Record a reading every  Minutes

Begin recording after a delay of  Minutes

Trigger alarm when readings above/equal  °C

After  Consecutive violation readings (30 Minutes)

Trigger alarm when readings below/equal  °C

After  Consecutive violation readings (30 Minutes)

Configure requires a password

Download requires a password

# Configuration Settings

## Freezer

LogTag Configure

**Action List**

- ✓ 1. Locate and identify LogTag(s)
- ▶ 2. Configure LogTag(s) for next use
- 3. Prepare LogTag(s) for next use

User ID:

Push button start  **LogTag battery: OK**

Enable pre-start logging

Record readings continuously, overwrite oldest when memory full

Record readings so that:

Readings recorded will span at least  days

Number of readings to record  maximum is 15905

Record a reading every  Minutes

Begin recording after a delay of  Minutes

Trigger alarm when readings above/equal  °C

After  Consecutive violation readings (30 Minutes)

Trigger alarm when readings below/equal  °C

After  Consecutive violation readings (30 Minutes)

Configure requires a password

Download requires a password